



CX500SE
Kit Helicopter

INSTRUCTION MANUAL



Features

- Simple and light weight design provides awesome flight performance and extreme 3D capability
- Rigid carbon fiber frame design
- Carbon fiber stabilizer set
- Full Alu. main and tail rotor set
- Streamlined factory painted fiberglass canopy
- Rotor head/tail with thrust bearings
- Direct-to-swash CCPM linkage
- Tail rotor drive belt system
- Fully driven tail auto rotation system
- Alu / CF tail servo boom mount
- Carbon fiber Tail Boom Brace
- Long CNC battery mount for adjustable CG

www.copterx.com

Copyright © 2008 KY MODEL Company Limited.

MENU

Table of content	1
1. Introduction	2
2. Precaution	2
3. Safety Tips	2
4. Self-preparation (Equipment)	3
5. Self-preparation (Tools)	3
6. Symbols Guide	4
7. Assembly Section	5

1. Introduction

Thank you for choosing CopterX CX500SE! You are about to enter the world of high performance electric powered helicopter. CX500 was manufacture with highest quality materials available. Please read the following instruction to ensure proper operation of this model. And keep a copy of this manual for future reference.

2. Precaution

CopterX R/C helicopter are NOT A TOY. Improper use of these products may cause serious injury or death. Manufacture and seller assume no liability for the operation or use of this product.

For intermediate and advanced pilot, CX500SE is able to offer high performance in both normal or 3D flying. For less experience pilot it would be helpful to seek advice from experienced pilot for setup and operation to enjoy the full potential of you new flying machine.

Please check all screw and cabon fiber parts for wear, creaks, or missing before and after each flight. Ensure all screw are tight and apply thread lock when necessary. Replace all worn out or broken parts necessary. Please use gunnies CopterX parts to ensure proper operation with you model. CX500SE is a consumer item. Any damage or dissatisfaction as a result of accidents or modifications are not covered by any warrantee and cannot be returned for repair or replacement. Please contact our local distributors for free technical consultation and replacement parts when you experience problems during operation or maintenance.

3. Safety Tips

Only operate CX500SE in detonated air field away from crowds and keep save distance with helicopter. Do not operate model under drug influence, poor physical health or extreme weather conditions. Keep save distance within tall building, power cables and automotive as these situation may effect the range of the transmitter.

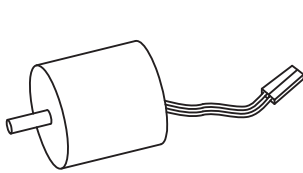
Keep CX500SE away from moisture and other contaminants as there are a lot of electrical compo-nent on this copter. These situations may cause malfunctions of the helicopter and possible injury or death.

CX500SE was designed for leisure and 3D flying. Please do not use it for any other purpose which this product is not design for.

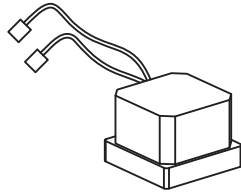
Keep CX500SE away from high temperature and flames to avoid damage to the helicopter and possible fire.

4. Self-preparation (Equipment)

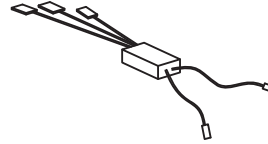
Radio control equipment is necessary to complete the assembly. (Not included in kit)



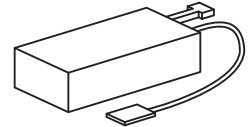
Brushless Motor



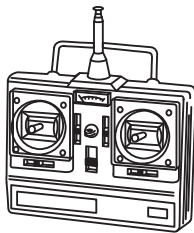
Gyro



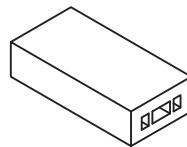
Brushless ESC



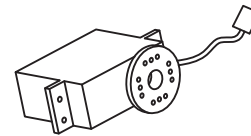
Li-Poly Battery



Transmitter
(6ch, helicopter system)



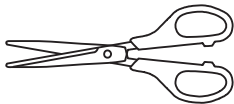
Receiver
(6ch or more)



Micro Servo x 3pcs (movements)
Micro Servo x 1pcs (tailrudder)

5. Self-preparation (Tools)

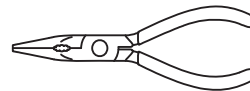
Tools is necessary to complete the assembly. (Not included in kit)



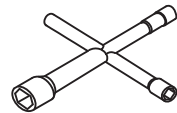
Scissors



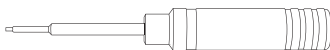
Cutter Knife



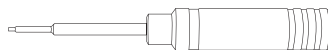
Needle Nose Pliers



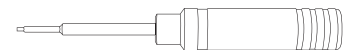
Plug Wrench
(4mm 5.5mm)



1.5mm Hex Driver



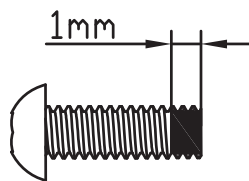
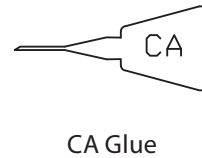
2mm Hex Driver



2.5mm Hex Driver

6. Symbols Guide

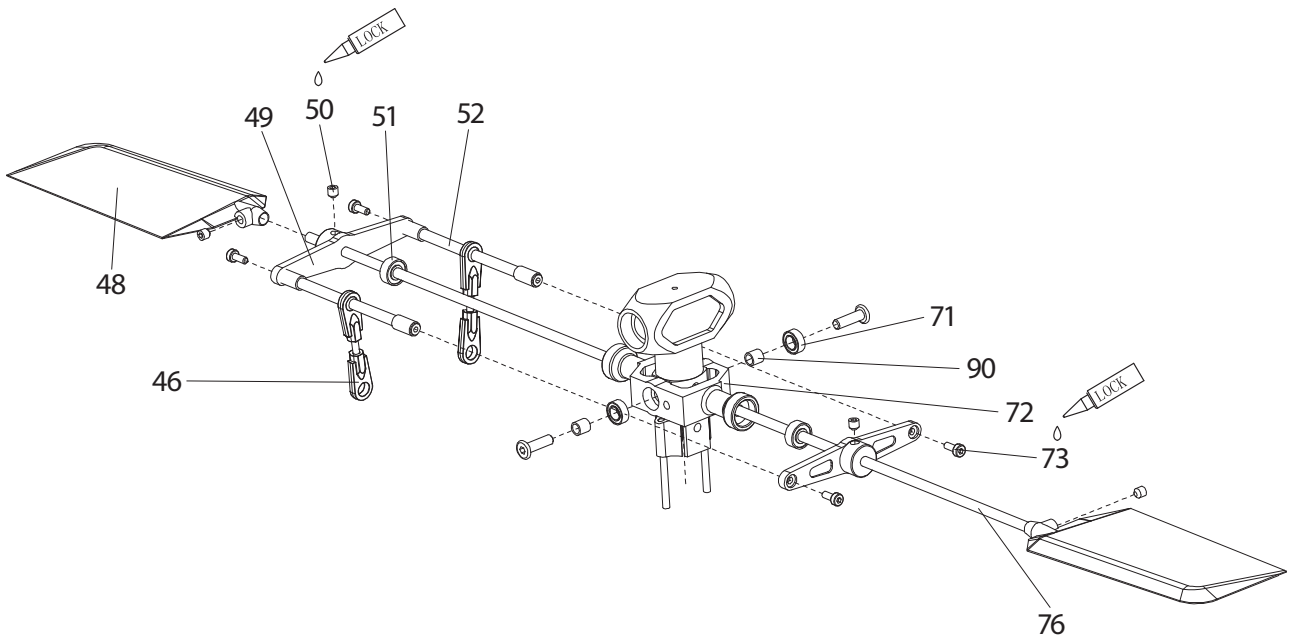
When following symbols were shown, please add glue or oil accordingly to ensure proper operation.



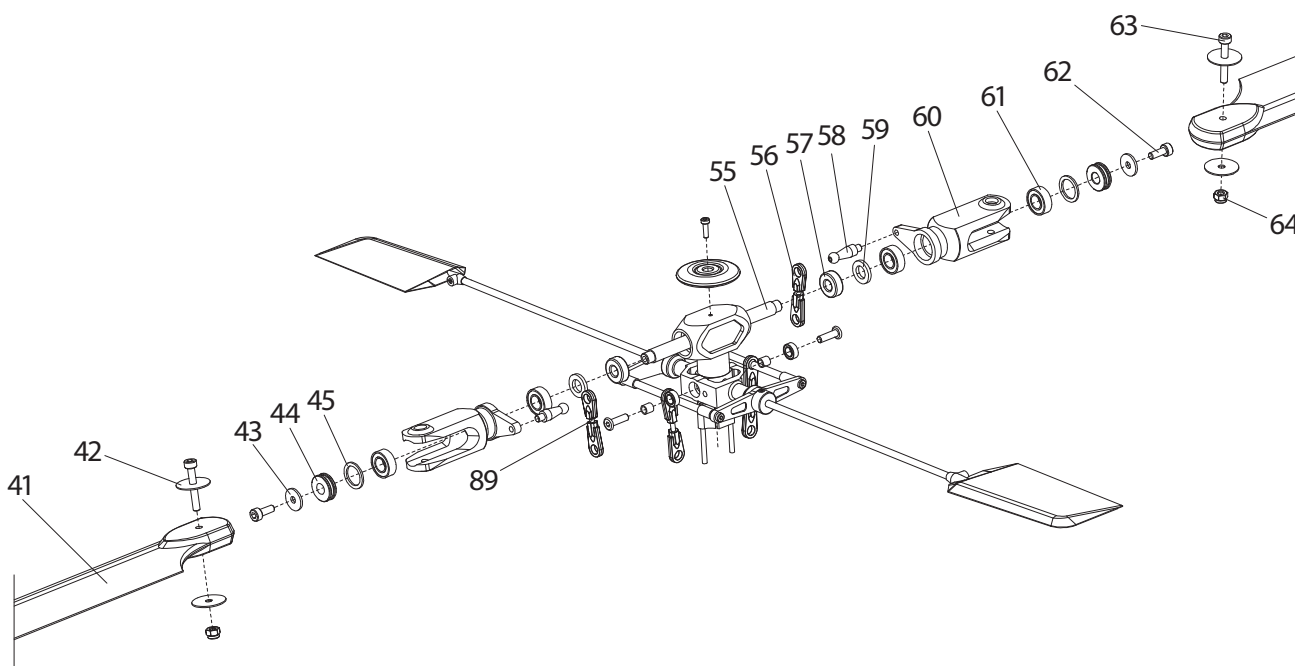
Apply Thread Lock according to the picture above and wipe of excess if necessary.

7. Assembly Section

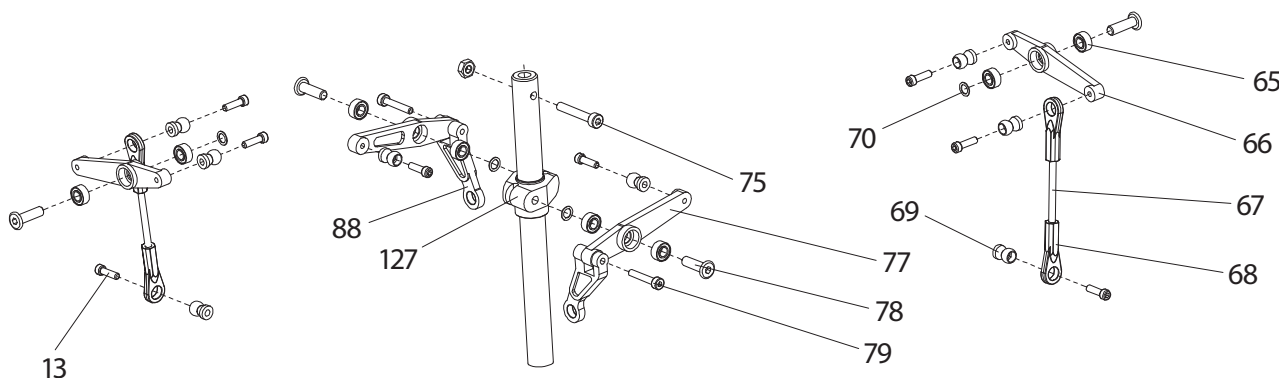
No.	Code No.	Name	Specification	Q'ty	No.	Code No.	Name	Specification	Q'ty
46		Ball Link B		6	71		Bearing	Ø4xØ7x2.5	2
48		Flybar Paddle		2	72		Flybar Seesaw Holder		1
49		Stabilizer Control Arm		2	73		HM 2x5 Screw		16
50		M 3X3 Set Screw		6	76		Flybar Rod		1
51		Bearing	Ø3xØ8x3	2	90		Copper Collar	3x4x4mm	2
52		Cross Member		2					



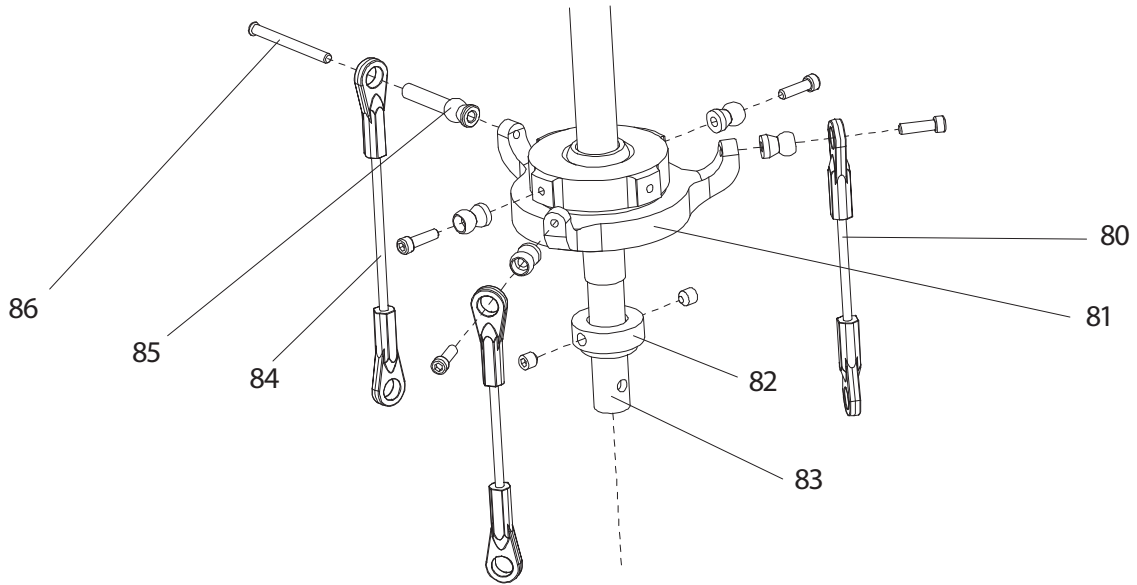
No.	Code No.	Name	Specification	Q'ty	No.	Code No.	Name	Specification	Q'ty
41		Main Blade		2	58		Long Linkage Ball		2
42		Washer	Ø 15	4	59		Spacer	Ø 10.5 Washer	2
43		Washer	Ø 10	2	60		Main Blade Holder		2
44		Thrust Bearing	Ø 5 x Ø 12 x 4	2	61		Bearing	Ø 6 x Ø 12 x 4	4
45		Washer	Ø 12	2	62		HM 3x8 Screw		2
55		Feathering Shaft		1	63		HM 3x20 Screw		2
56		Ball Link C		2	64		Lock Nut	3mm	4
57		Damper Ring		2	89		Linkage Rod	2 x 10mm	2



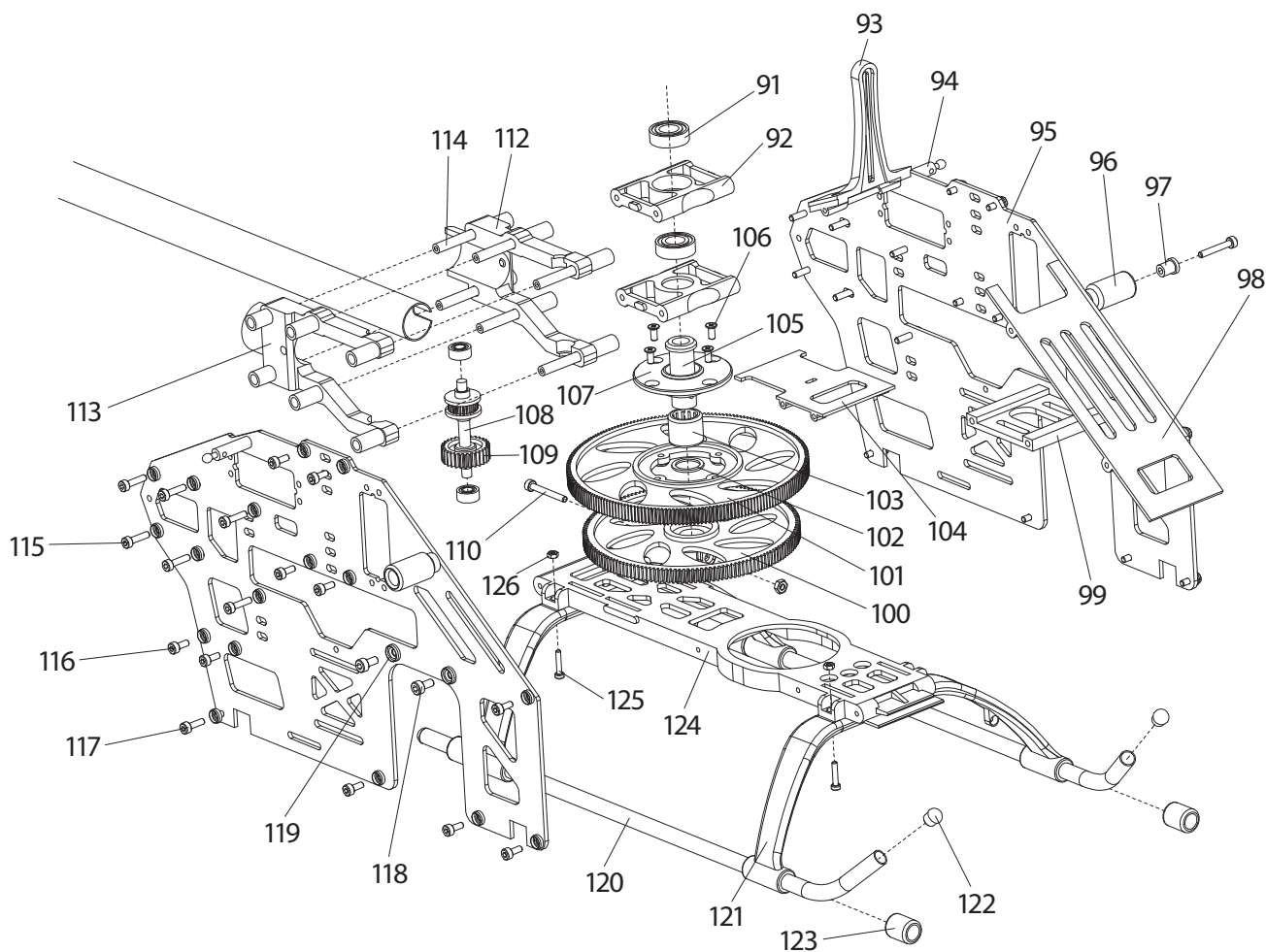
No.	Code No.	Name	Specification	Q'ty	No.	Code No.	Name	Specification	Q'ty
13		HM 2x8 Screw		6	75		HM 2x16 Screw		3
65		Bearing	Ø 3 x Ø 6 x 2.5	10	77		Wash-out Control Arm		2
66		Flybar Control Arm		2	78		M 3x10		6
67		Linkage rod	2 x 30mm	2	79		HM 2x12		2
68		Ball Link D	2 x 30mm	12	88		Radius Arm		2
69		Linkage Ball		12	127		Wash-out Base		1
70		Washer	Ø 4.5	5					



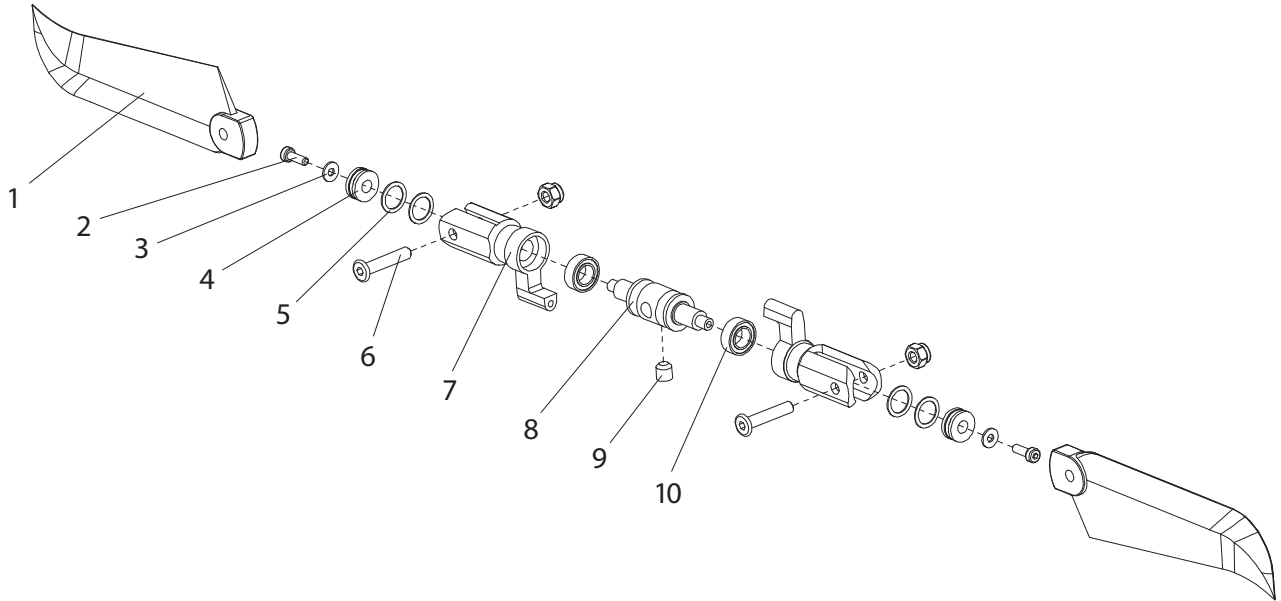
No.	Code No.	Name	Specification	Q'ty	No.	Code No.	Name	Specification	Q'ty
80		Linkage Rod	2 x 26mm	2	84		Linkage Rod	2 x 33mm	1
81		Swash Plate		1	85		Ball End (Long)		1
82		Collar		1	86		KM 2x12 Screw		1
83		Main Shaft		1					



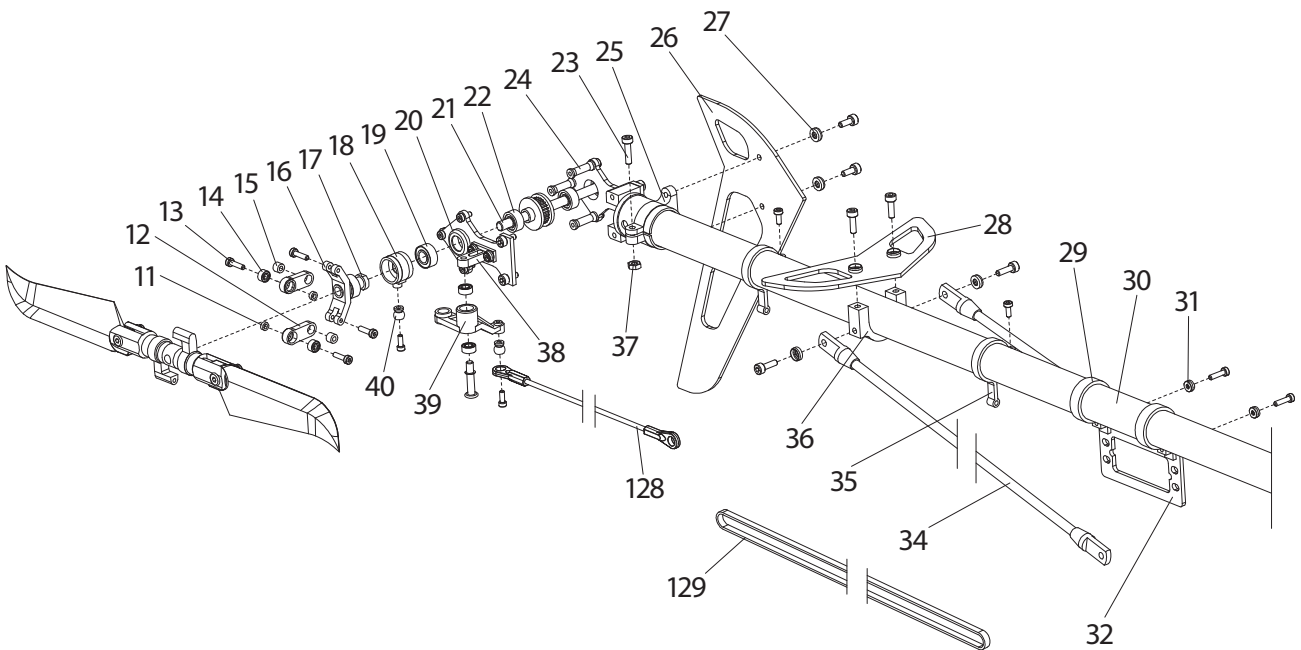
No.	Code No.	Name	Specification	Q'ty	No.	Code No.	Name	Specification	Q'ty
91		Bearing	Ø8xØ16x5	2	109		Tail Drive Gear		1
92		Main Shaft Holder		2	110		HM 2.5x20 Screw		1
93		Anti-rotation Bracket		1	112		Metal Tail Boom Lock (Left)		1
94		Canopy Mounting Bolt		2	113		Metal Tail Boom Lock (Right)		1
95		CF Main Frame		2	114		Tail Boom Lock Steel Pole		6
96		Spacer		2	115		HM 2.5x10 Screw		13
97		Canopy Spacer Collar		2	116		HM 2.5x6 Screw		26
98		Metal Battery Mounting Plate		1	117		HM 2.5x8 Screw		6
99		Motor Mount		1	118		HM 3x6 Screw		4
100		Tail Drive Gear		1	119		Washer		4
101		Main Gear		1	120		Landing Skid Pipe		2
102		Washer	Ø13	1	121		Landing Skid		2
103		One Way Bearing	Ø10xØ14x13	1	122		Skid Plug		4
104		Metal Electronic Parts Mounting Plate		1	123		Skid Nut		4
105		One Way Bearing Shaft		1	124		Bottom Plate		1
106		KM 2x6 Screw		4	125		HM 2x10 Screw		4
107		One Way Bearing Housing		1	126		Nut	M2	4
108		Tail Drive Gear Shaft		1					



No.	Code No.	Name	Specification	Q'ty	No.	Code No.	Name	Specification	Q'ty
1		Tail Blade		2	6		M 3x15 Screw		3
2		HM 2x6 Screw		2	7		Tail Blade Holder		2
3		Washer	Ø5	2	8		Tail Blade Housing		1
4		Bearing	Ø 3.5 x Ø 8 Ø 3.5	2	9		M 4x4 Set Screw		1
5		Washer	Ø5	4	10		Bearing	Ø 5 x Ø 9 x 3	2



No.	Code No.	Name	Specification	Q'ty	No.	Code No.	Name	Specification	Q'ty
11		Copper Washer	Ø 3.5	2	27		Washer		40
12		Tail Pitch Link		2	28		CF Horizontal Tail Fin		1
13		HM 2x8 Screw		6	29		Aluminum Rudder Servo Tray		2
14		Bearing	Ø 2 x Ø 5 x 2.5	2	30		Tail Boom		1
15		Copper Collar	Ø 4	2	31		Washer		4
16		Aluminum Tail Pitch Control Arm		1	32		CF Rudder Servo Mount		4
17		Tail Pitch Control Slider Nut		1	34		Tail Support Rod		2
18		Tail Pitch Control Slider		1	35		Tail Linkage Rod Guide		2
19		Bearing	Ø 5 x Ø 10 x 4	2	36		Horizontal Fin Mount		1
20		Tail Unit Housing (R)		2	37		Nut	M2.5	3
21		Tail Drive Shaft	19T	1	38		Tail Pitch Lever Mount		1
22		Bearing	Ø 4 x Ø 9 x 4	4	39		Tail Pitch Lever		1
23		Screw	2.5 x 8mm	1	40		Linkage Ball		2
24		Mounting Bolt		3	128		Rudder Linkage Rod		1
25		Tail Unit Mount		1	129		Rudder Drive Belt		1
26		CF Vertical Tail Fin		1					





www.copterx.com

Copyright © 2008 KY MODEL Company Limited.